



Chronic Rhinosinusitis's with Nasal Polyps

Tanishq Dubey ^{a≡} and Prasad Deshmukh ^{b*⊖}

^a *Jawaharlal Nehru Medical College, Datta Meghe Institute of Medical Sciences (Deemed to be University), Sawangi (Meghe), Wardha - 442001, Maharashtra, India.*

^b *Department of ENT, Jawaharlal Nehru Medical College, Datta Meghe Institute of Medical Sciences (Deemed to be University), Sawangi (Meghe), Wardha - 442001, Maharashtra, India.*

Authors' contributions

This work was carried out in collaboration between both authors. Both authors read and approved the final manuscript.

Article Information

DOI: 10.9734/JPRI/2021/v33i60A34475

Open Peer Review History:

This journal follows the Advanced Open Peer Review policy. Identity of the Reviewers, Editor(s) and additional Reviewers, peer review comments, different versions of the manuscript, comments of the editors, etc are available here: <https://www.sdiarticle5.com/review-history/80105>

Review Article

Received 10 October 2021
Accepted 17 December 2021
Published 19 December 2021

ABSTRACT

Chronic Rhinosinusitis is a chronic disease that negatively affects the quality of life. When associated with nasal polyps, there is worsening of the condition, and it becomes harder to treat due to the high rates of recurrence and the increased morbidity rates. Though having a set treatment method, the condition still has unknown etiology and pathophysiology, which makes it extremely hard to diagnose and evaluate. Due to these unknown factors, treatment is still not as precise and effective; we still rely on systemic drugs like corticosteroids which most often do not resolve the disease, and we then present surgical options, though effective still do not pose as an effective cure, which may be a factor in the high rate of recurrences. However, there have been giant leaps in the specialized research of this particular topic, leading to classification through biomarkers allowing us to study and consolidate data on the disease pathology and all of the different options causing recurrences, which further enhances our understanding of how this disease affects a diverse population. The majority of the treatment given in this disease is not evidence-based but instead based on clinical observation and experience. Therefore, with CRSwNP, we are confronted with more questions than answers, which is problematic as the disease can often be associated with comorbidities leading to a further decrease in quality of life. Hence, this review article aims to aggregate and compile this valuable research and highlight the strides which have already been made while promoting additional research so that the disease can become more manageable without any recurrence.

[≡] 3rd Year, MBBS Student;

[⊖] Professor and Head of Department;

*Corresponding author: E-mail: pra_desh67@rediffmail.com;

Keywords: Chronic; rhinosinusitis; nasal polyp; recurrence; nasopharynx.

1. INTRODUCTION

The nasal cavity is an integral part of the cephalic region, divided into two smaller cavities by the nasal septum and structurally maintained by a framework of bone and cartilage. It opens to the external environment through apertures known as nares, while it opens posteriorly into the nasopharynx via choanae. Each cavity has three parts: the respiratory area, the vestibule, and the olfactory area. The nasal cavity is surrounded by paranasal sinuses, mucosal lined, air containing cavities. All paranasal sinuses except the sphenoid sinus open into the nasal cavity via ducts draining through the Ostia while the sphenoid sinus opens into the posterior roof [1]. Inflammation of adenoidal cavity and paranasal sinuses is called chronic rhinosinusitis, with four significant symptoms: facial tenderness or pressure decreased or loss of smell, nasal discharge, and nasal obstruction, of which two must be present for twelve weeks or more. The diagnosis must be supported, and objective evidence is provided on physical examination via anterior rhinoscopy or endoscopy and radiography. [2]. Nasal polyps are defined as benign inflammatory lesions that develop from the mucosa of nasal sinuses and cavities, primarily present at outflow tracts, which have a high recurrence rate but still have unknown etiology [3]. There are two types of organization of chronic rhinosinusitis, phenotypic and genotypic. The phenotypic classification of chronic rhinosinusitis is separated into CRSwNP (chronic rhinosinusitis with nasal polyps) and CRSsNP (chronic rhinosinusitis without nasal polyps). The phenotypic classification is more complicated based on various genetic factors and an examination of the expression of various proteins and has been discussed at length later in the article. [4]. Nasal polyps are linked with other diseases as well, like cystic fibrosis, persistent asthma and aspirin-exacerbated respiratory disease (AERD); however, due to the high prevalence, it is most commonly linked with chronic rhinosinusitis [5]. CRSwNP affects twenty-five to thirty percent of the population, which is minimal. However, it is associated with high morbidity and leads to increasing poor quality of life. This makes the disease essential to diagnose, evaluate and treat in clinical settings while all efforts must be made to increase the knowledge around its etiology and pathogenesis [6].

2. EPIDEMIOLOGY

Adenoidal polyps are seen in thirty-six percent of aspirin intolerance patients, seven percent of asthma patients, 0.1 percent of children, and roughly twenty percent of cystic fibrosis patients. Churg-Strauss Syndrome, hypersensitive fungal sinusitis, cilia dyskinesic syndrome (Kartagener's), and Young Syndrome are linked to nasal polyps. Nonallergic asthma has a higher prevalence of nasal polyps than hypersensitive asthma (thirteen percent vs. five percent, P 0.01). Recurrences occur in about forty percent of surgical polypectomies subjects. Chronic rhinosinusitis substantially influences value of life, with symptoms similar to those of conventional debilitating illnesses such as congestive heart failure, back pain of chronic type, and chronic obstructive pulmonary disease. Notwithstanding these findings, only two percent of people with CRS have been formally identified by a physician. CRSwNP levels rise by age through a forty-two year average onset across all ethnic groups. There appears to be a genetic component to the progress of nasal polyps. To standardize medical care, consideration of different types of diagnosis, and gather important relative investigative data, a categorization arrangement for staging adenoidal polyps is planned.

Amidst the general population, CRSwNP is pretty common. Despite the efficacy of existing medicines, there are still various unmet requirements. The high prevalence of unrestrained signs, the common reappearance of nasal polyps following surgical treatment, and the long-standing side effects of oral corticosteroids all point to the need for innovative medicines to meet these unmet requirements. The effectiveness of biologics in the actual world has yet to be recognized, despite encouraging findings from randomized controlled studies [1].

Six investigations looked at the occurrence of CRS with NP in the all-purpose population. The frequency in South Korea was 2.5–2.6 percent of the overall population, which came out to be higher than that in the United States (1.1 percent of the overall population). Males (3.2–3.7 percent) had a higher prevalence of CRSwNP than females (2.0–3.3 percent), and the 60–69-year-olds had the highest occurrence. In the United States, NP came out in 6.1–31 percent of the population with chronic rhinosinusitis, and in

Denmark, it was found in twenty-four percent of the population with chronic rhinosinusitis [2].

Uncontrolled CRS with NP is when three or greater of the succeeding symptoms: nasal obstruction on almost all days of a week, rhinorrhea/postnasal leak on most days of a week, face associated tenderness/heaviness on most days of a week, hyposmia, sleep trouble/exhaustion, adenoidal endoscopy with unwell mucosa; symptoms (as above) continue regardless saving treatment in the previous six calendar months. In literature, there is no mention of unrestrained CRS with NP in the overall CRS with NP population. Only two Belgian investigations found forty-one-point-eight percent and forty percent uncontrolled CRSwNP among CRSwNP patients who had previously had NP surgery [3].

2.1 Symptoms

The most prevalent symptoms described by individuals with CRSwNP were facial aching, nasal overcrowding, anosmia, sneeze, and head pain. In North America, 60–92.2 percent of patients experienced facial pain, while in Europe, 31–45 percent reported facial pain and in Asia, 19–100 percent reported facial pain [4]. Nasal congestion was reported by 95–100 percent of CRSwNP patients in North America, 73–88 percent of CRSwNP patients in Europe, and 76–81% of CRSwNP patients in Asia. Patients with CRSwNP in North America reported losing their sense of smell 56–84 percent of the time, 35–90 percent of the time in Europe, and 30–100 percent of the time in Asia. Eighty-eight percent of patients in North America²⁶, 12–73 percent of patients in Europe⁸, and 27–51 percent of patients in Asia experienced sneezing. Patients in North America experienced headaches 33–95.8 percent of the time, 20–41 percent of the time in Europe, and 2–76 percent of the time in Asia [4].

2.2 Risk Factors

The most common risk reasons for the development of CRSwNP were asthma, genetic polymorphisms, and ageing. Males, cigarette smoking, hypersensitivity, growths, CRS-related indications, tobacco usage, bronchitis of chronic type, occupation, aspirin intolerance, increased serum levels of Interleukin-5 or Interleukin-13 cytokines, decreased schooling levels, overweightness, decreased S100A8/9 (calprotectin) protein levels, first- or second-

degree relatives with CRS with NP, higher Lund-Mackay score (LMS), increased blood eosinophil and tissue sums [5].

2.3 Etiopathogenesis

The exact etiopathogenesis of CRSwNP is still unknown. However, major strides have been made to determine factors affecting and causing the chronic disease. In normal circumstances, the airway epithelial layer offers the primary line of resistance against entry of external bodies by the formation of physical barrier through the construction of tight junctions between cells, also helps to create homeostasis. There is also the mechanism of clearance and mucus production, which help in the prevention or stopping exposure to the pathogens. Finally, there is also an inducible innate immune system that helps guard the respiratory epithelium. Any single factor or a combination of the factors above may be deranged, and this can lead to the onset of a chronic airway disease like Chronic rhinosinusitis with nasal polyps, asthma, etc [7].

There are several hypotheses for the onset and progression of CRSwNP:

1) Microbial colonization

Staphylococcus aureus and Pseudomonas aeruginosa are the most common bacterial pathogens of the nasal cavities. Colonization of nasal cavities by such organisms can lead to defect in airway epithelium, giving way to the development of chronic inflammation. Similarly, fungi have also been thought to cause this process.

2) Innate Immune System Dysregulation

Several innocuous factors such as elevation of oncostatin M and IL-6 can lead to the extensive tissue defect. Another observation is the presence of elevated beta-defensins, lysozymes, and PLUNC proteins as opposed to normal controls. Faults in mucus production can also be seen, leading to impaired mucociliary clearance leading to chronic disease.

3) Dysregulated Adaptive Immune System

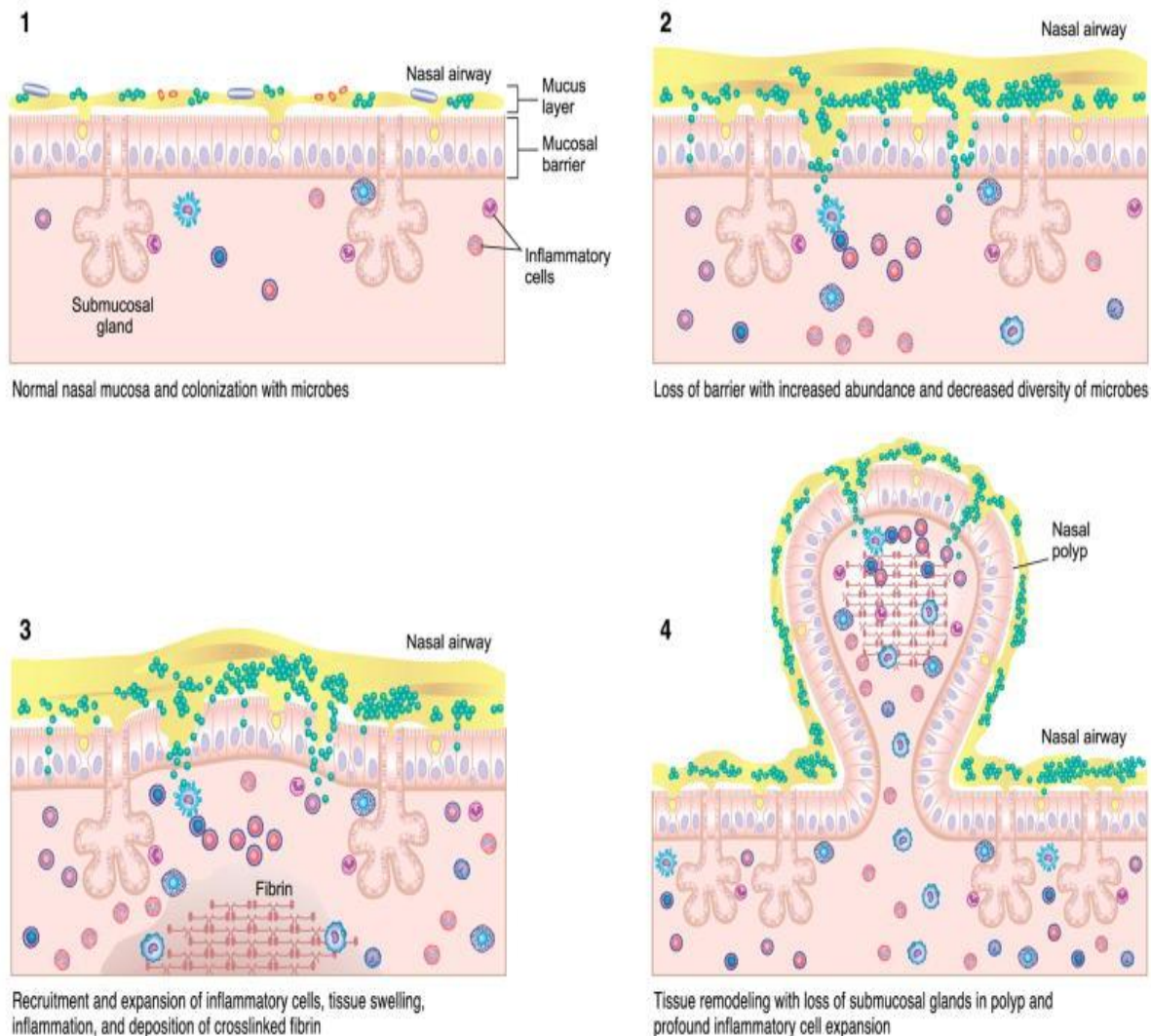
It was observed that there were elevated levels of naive B cells, activated plasma cells, and several types of immunoglobulins in patients with CRSwNP.

The aforementioned variables can cause CRSwNP to develop, either directly or indirectly. As a result, it's thought that CRSwNP has an essentially deficient sino-nasal mucosa, which might promote colonization via pathogens or antigens, resulting in persistent inflammation helped by a malfunctioning immune system [6].

2.4 Endotypic Classification

CRSwNP can be categorized into two classifications, phenotypic classification, and the phenotypic classification. The phenotypic classification is not extremely useful nowadays as the morphology of two diseases can be alike but not have the exact cause. The phenotypic classification is slowly emerging to be highly useful based on the underlying pathological

mechanism. The phenotypic classification is carried out by measuring biomarkers, which are naturally occurring molecules or genes that can help identify a particular process or disease. Ideally, a biomarker should be easily identified, easily obtained, specific to a particular disease, and have high sensitivity. CRS biomarkers are often taken from peripheral blood, nasal secretions, nasally exhaled breath, and tissue from nasal biopsies. There are a variety of biomarkers that are used in classification and evaluation, namely IgE, eosinophilia, various cytokines, periostin, p-glycoprotein, etc [4]. Through evaluation of these biomarkers; we can separate into biological subtypes or endotypes, which can also have a significant impact on treatment [8].



Figs. 1- 4.

However, genetics can affect the biomarkers and the entirety of the classification, as seen through recent studies. Initially, CRSwNP was first characterized as having a type 2 inflammatory response, which included an increase in tissue eosinophilia and an increase in basophils, mast cells, IgE, and type 2 cytokines. However, all of the research was conducted on a European population; however, when identical tests were undertaken on an Asian population, the results were drastically different. In comparison to the European population, they had no tissue eosinophilia and lower levels of IL-5 but higher amounts of type-1 IFN. Thus, though this classification process is still evolving, we can say identifying the inflammatory endotype to enact patient classification rather than clinical phenotypes can provide a more accurate description of the condition. Thus, we may conclude that CRSwNP is a disease with a wide range of clinical manifestations [9].

2.5 Histopathology

Sinonasal growths are mucosal swellings of the benign type that can appear in one of 4 histologic types:

(i) An edematous, eosinophilic nasal polyp is most prevalent (85-90%) branded by edema, hyperplasia of the epithelium of goblet cell, deepening of the basement membrane, the existence of many leukocytes, chiefly eosinophils.

(ii) A fibrous inflammatory polyp is characterized by inflammation of chronic type and metaplastic alterations in the underlying epithelium.

(iii) One with distinctive form has substantial hyperplasia of the seromucous glands but other than that, resembles the edematous type of polyp.

(iv) Another growth with uncharacteristic stroma is the fourth form, which happens to be extremely rare.

This latter polyp necessitates awareness and rigorous histological testing to avoid misinterpretation of a tumor. This latter polyp demands vigilance and thorough histological testing to avoid misinterpretation of a tumor [10].

2.6 Differential Diagnosis

1. Eosinophilic Chronic Rhinosinusitis
2. Hypersensitive Fungal Rhinosinusitis

3. Aspirin-Exacerbated Respiratory Disease
4. Cystic Fibrosis [6]

2.7 Comorbidities

CRSwNP is frequently connected to further primary medical conditions that might worsen the illness's harshness. In comprehensive reflective research encompassing over four hundred thousand primary care patients, CRS with NP patients had a suggestively higher pre-morbid occurrence of rhinosinusitis of acute type, hypersensitive rhinitis, and chronic type, asthma, gastroesophageal reflux syndrome, and sleep apnea [6].

In the same study, the connection between asthma and CRSwNP became clearer. A great majority of asthmatics (88 percent) have at least some radiographic evidence of sino-nasal inflammation. CRSwNP is believed to afflict 7% of asthmatics, with asthma described in 26–48% of CRSwNP patients. Patients with CRS with NP were 7.5 times more likely to have asthma than those with CRSsNP. Furthermore, more significant sino-nasal inflammation has been linked to worsening asthma symptoms [6].

Thus, with aging and preponderance to comorbidities, the value of life does decrease rapidly in patients with diseases of a chronic type such as CRSwNP.

2.8 Role of Inflammatory Cells

A link was discovered between high blood eosinophil count and CRSwNP relapse times. Some major studies also discovered a straight link between recurring CRSwNP and blood basophil levels. The blood basophil and eosinophil sums of CRSwNP patients were highly interrelated. Patients who suffered a disease relapse had significantly greater preoperative neutrophil-to-lymphocyte, eosinophil-to-lymphocyte, and basophil-to-lymphocyte proportions than those who did not. Mean blood eosinophil counts decreased suggestively from before to after endoscopic sinus surgery in patients with histologically established eosinophilic-type CRSwNP [7].

The evidence suggests that blood eosinophil and basophil counts must be involved for routine preoperative work-up of CRS with NP patients to provide correct prognostic evidence, implement sensible postoperative follow up rules, and

deliver focused postoperative medicinal therapies [8].

2.9 Precision Medicine and Treatment

Precision medicine is a medical concept that aims to personalize healthcare by tailoring medical decisions, procedures, and products to each patient. Precision medicine, based on a thorough understanding of disease causes, typically combines diagnosis and treatment to determine the best course of action. Precision medicine's cornerstones are patient involvement in treatment decision-making, prediction of treatment success, methods to avoid disease progression, and tailored endotype-driven treatment. Appropriate and standardised genotyping and knowledge of biomarkers that predict therapy efficacy are required for endotype-driven treatment [9].

Precision medicine application approaches to the therapy of upper airway illnesses such as CRS with NP will be a significant endeavour for the coming decade. Precision medicine includes endotype-driven treatment, which is especially useful for patients with severe unrestrained

disease. Once we can identify the patient(s) with the phenotypic and endotype that will profit the maximum from the treatments, monoclonal antibodies could be a possible new therapeutic [10].

A crucial difficulty in achieving cost-effectiveness will be the capacity to forecast which patients will reply favorably to a specific antibody of monoclonal type. In an ideal world, we would be able to identify these people earlier in the illness and treat it to avoid many surgeries in the coming years ahead and the progression of lower airway disease [11].

The most common treatment for CRSwNP is pharmacological, which includes topical and/systemic glucocorticosteroids, irrigations of saline, and occasionally antibiotics when required. If conservative methods are unsuccessful, surgical methods are performed, followed by continuous medical care. New therapy strategies based on careful management of the Th2 inflammatory endotype commonest in CRS with NP have previously proven success in randomized measured trials and possible alternatives in the sooner future [12].

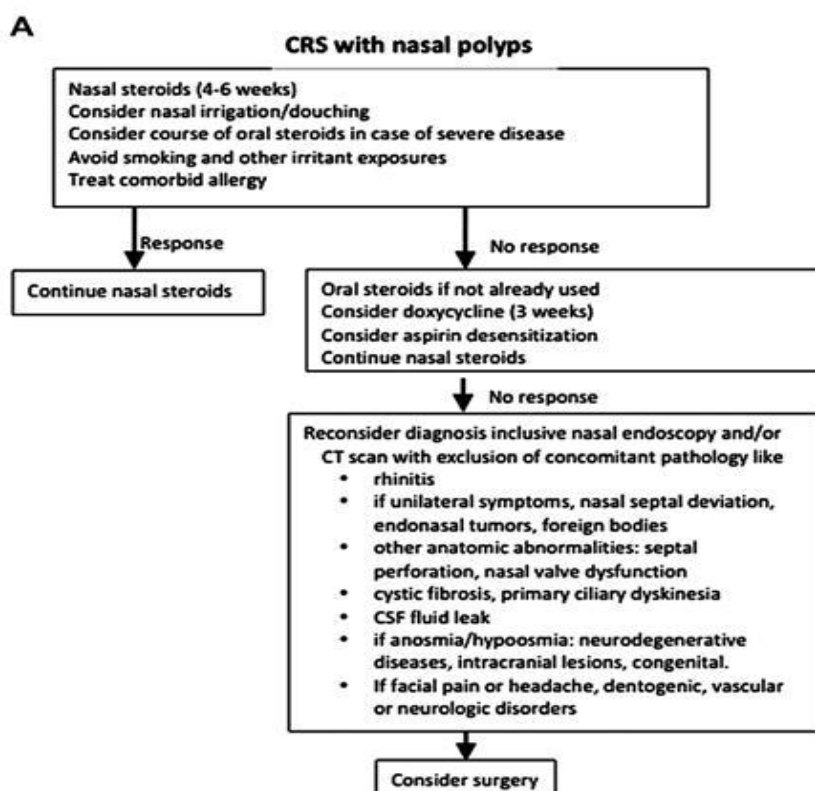


Fig. 5. CRS with nasal polyps [11-20]

Newer treatments option in CRSwNP include using

1. Anti-Immunoglobulin E
2. Anti-Interleukin-5
3. Anti-Interleukin-4/Interleukin-13 [13]

As more clinical trials of biologic treatments for CRS are completed, a cost-effectiveness analysis will be required. These therapies should be compared against surgery as part of the medical therapeutic alternatives in future studies [14].

The treatments that are currently accessible are primarily based on clinical experience and are not backed up by evidence-based medicine. We will only treat CRSwNP symptomatically until we completely understand the disease's underlying etiology [15].

3. CONCLUSION

Chronic Rhinosinusitis with Nasal Polyps is a fairly common though overlooked disease that affects many individuals from different populations. This disease, though considered minor, significantly decreases the patient's quality of life, which requires that we perform comprehensive research on this topic, particularly the treatment. Though we have made a breakthrough in understanding the pathology of the disease by classifying the various endotypes with the help of biomarkers, the studies remain viable in a smaller population and have not been conducted successfully on a large scale. The treatment options are also a little dated, which concerns the masses affected. Thus, the increasing research and solutions being given are highly valuable and help to innovate treatment methods and ultimately understand the disease in a better way.

CONSENT

It is not applicable.

ETHICAL APPROVAL

It is not applicable.

COMPETING INTERESTS

Authors have declared that no competing interests exist.

REFERENCES

1. Sobiesk JL, Munakomi S. Anatomy, Head and Neck, Nasal Cavity. In: StatPearls [Internet]. Treasure Island (FL): StatPearls Publishing; 2021 [Cited 2021 Aug 28]. Available: <http://www.ncbi.nlm.nih.gov/books/NBK544232/>
2. Sedaghat AR. Chronic Rhinosinusitis. *Am Fam Physician*. 2017 Oct 15;96(8):500–6.
3. Newton JR, Ah-See KW. A review of nasal polyposis. *Ther Clin Risk Manag*. 2008 Apr;4(2):507–12.
4. Avdeeva K, Fokkens W. Precision Medicine in Chronic Rhinosinusitis with Nasal Polyps. *Curr Allergy Asthma Rep*. 2018;18(4):25.
5. Kwah JH, Peters AT. Nasal polyps and rhinosinusitis. *Allergy Asthma Proc*. 2019 Nov 1;40(6):380–4.
6. Stevens WW, Schleimer RP, Kern RC. Chronic Rhinosinusitis with Nasal Polyps. *J Allergy Clin Immunol Pract*. 2016;4(4):565–72.
7. Hulse KE, Stevens WW, Tan BK, Schleimer RP. Pathogenesis of nasal polyposis. *Clin Exp Allergy J Br Soc Allergy Clin Immunol*. 2015 Feb;45(2):328.
8. Akdis CA, Bachert C, Cingi C, Dykewicz MS, Hellings PW, Naclerio RM, et al. Endotypes and phenotypes of chronic rhinosinusitis: A PRACTICAL document of the European Academy of Allergy and Clinical Immunology and the American Academy of Allergy, Asthma & Immunology. *J Allergy Clin Immunol*. 2013 Jun 1;131(6):1479–90.
9. Workman AD, Kohanski MA, Cohen NA. Biomarkers in Chronic Rhinosinusitis with Nasal Polyps. *Immunol Allergy Clin North Am*. 2018 Nov;38(4):679–92.
10. Hellquist HB. Nasal polyps update. *Histopathology*. *Allergy Asthma Proc*. 1996 Oct;17(5):237–42.
11. Chen S, Zhou A, Emmanuel B, Thomas K, Guiang H. Systematic literature review of the epidemiology and clinical burden of chronic rhinosinusitis with nasal polyposis. *Curr Med Res Opin*. 2020 Nov;36(11):1897–911.
12. Chaaban MR, Walsh EM, Woodworth BA. Epidemiology and differential diagnosis of nasal polyps. *Am J Rhinol Allergy*. 2013;27(6):473–8.

13. Brescia G, Sfriso P, Marioni G. Role of blood inflammatory cells in chronic rhinosinusitis with nasal polyps. *Acta Otolaryngol (Stockh)*. 2019 Jan;139(1): 48–51.
14. Codispoti CD, Mahdavinia M. A call for cost-effectiveness analysis for biologic therapies in chronic rhinosinusitis with nasal polyps. *Ann Allergy Asthma Immunol Off Publ Am Coll Allergy Asthma Immunol*. 2019 Sep;123(3):232–9.
15. Ta N. Will we ever cure nasal polyps? *Ann R Coll Surg Engl*. 2019 Jan;101(1):35–9.
16. Ghavat, Chinmay, Nitin Bhola, Anendd Jadhav, Nupoor Deshpande, and Chetan Gupta. "Malignant Transformation of Solitary Cylindroma Involving the Frontonasal Region- A Rarity." *JOURNAL OF CLINICAL AND DIAGNOSTIC RESEARCH* 14, no. 4 (April 2020): ZD1–4. Available: <https://doi.org/10.7860/JCDR/2020/43006.13620>.
17. Jain, Shraddha, Prajakta Bhalerao, and Chandraveer Singh. "A New Endoscopic and Anatomical Classification of Deviated Nasal Septum with Clinical Relevance." *Medical Science* 24, no. 104 (August 2020):2544–54.
18. Singh, Chandra Veer, Shraddha Jain, Sagar Gourkar, and Sandeep Iratwar. "Salvage of Failed Endovascular Management of Internal Carotid Artery Injury during Endoscopic Endonasal Pituitary Surgery." *Journal of Clinical and Diagnostic Research*. 2020;14(12) (December): MD01–4. Available: <https://doi.org/10.7860/JCDR/2020/43778.14310>.
19. Singh CV, Jain S, Parveen S, Deshmukh P. The outcome of fluticasone nasal spray on anosmia and triamcinolone oral paste in taste dysgeusia in COVID-19 patients. *American Journal of Otolaryngology*. 2021 Aug;42(4).
20. Singh CV, Jain S, Parveen S. The outcome of fluticasone nasal spray on anosmia and triamcinolone oral paste in dysgeusia in COVID-19 patients. *American Journal of Otolaryngology*. 2021 Jun;42(3).

© 2021 Dubey and Deshmukh; This is an Open Access article distributed under the terms of the Creative Commons Attribution License (<http://creativecommons.org/licenses/by/4.0>), which permits unrestricted use, distribution, and reproduction in any medium, provided the original work is properly cited.

Peer-review history:

The peer review history for this paper can be accessed here:
<https://www.sdiarticle5.com/review-history/80105>